

State of Wyoming Corner Record

(in compliance with the CORNER PERPETUATION AND FILING ACT, Wyoming Statutes, 1997, Section 33-29-140, et. seq. and the Rules and Regulations of the Board of Registration for Professional Engineers and Professional Land Surveyors)

Reverse side of this form may be used if more space is needed.

Record of original survey and citation of source of historical information (if corner is lost or obliterated). Description of corner monumentation evidence found and/or monument and accessories established to perpetuate the location of this corner. Sketch of relative location of monument, accessories, and reference points with course and distance to adjacent corner(s) (if determined in this survey). Method and rationale for reestablishment of lost or obliterated corner.

FOUND: FOUND G.L.O. BRASS CAP, 2" DIAMETER IN GOOD CONDITION, SET IN A ROCK OUT CROP SUPPORTED BY A MOUND OF STONES. SET A LATHE & REFERENCED AS SHOWN. CAP MARKED AS SHOWN.

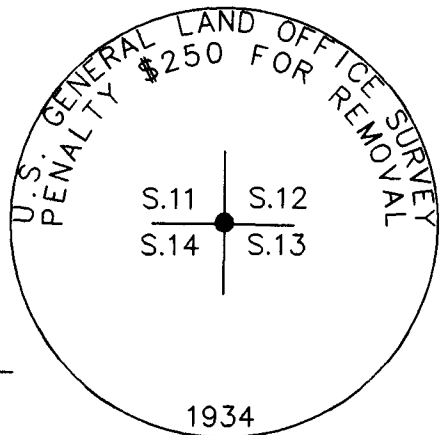
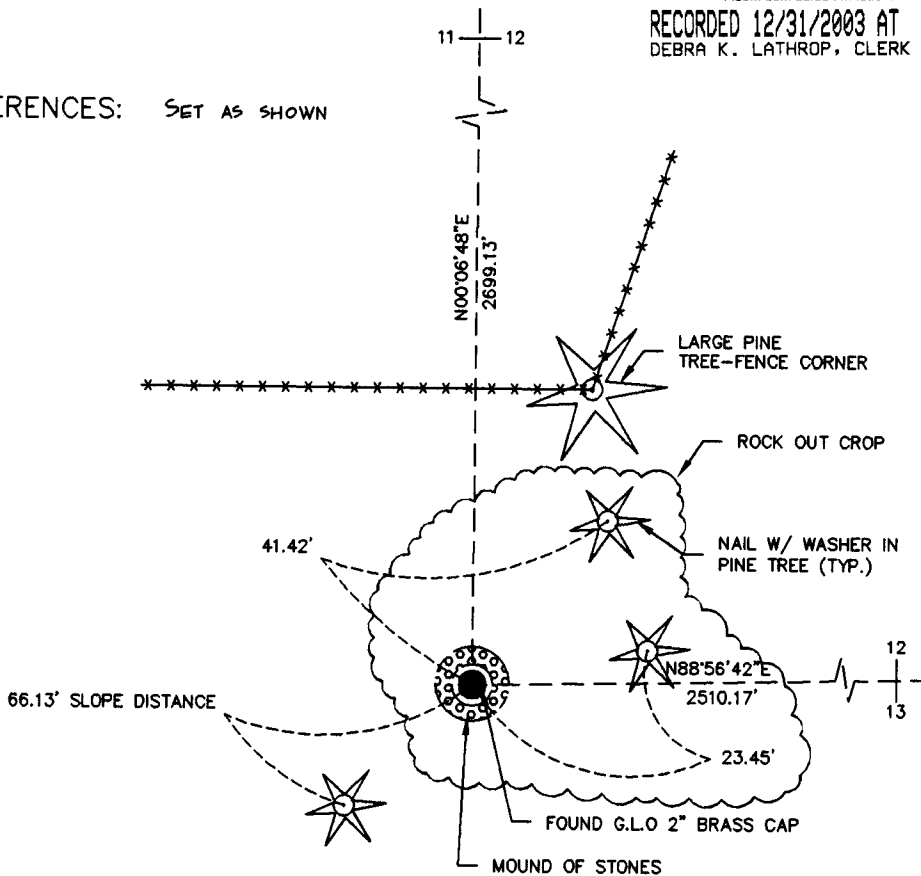
G.L.O. RECORD: IRON POST 3' LONG, 2" DIAMETER 1" IN GROUND WITH A BRASS CAP, BEDROCK AND IN A MOUND OF STONES TO THE TOP.

SET: NOTHING

REFERENCES: SET AS SHOWN



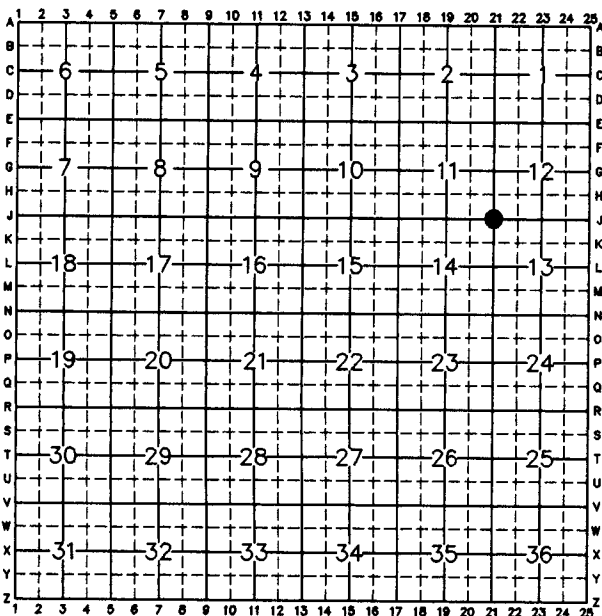
RECORDED 12/31/2003 AT 1:41 PM REC# 375062 BK# 1784 PG# 1265
DEBRA K. LATHROP, CLERK OF LARAMIE COUNTY, WY PAGE 1 OF 1



FOUND MONUMENT DETAIL

Date of Field Work: 12-03 Office Reference: 2-2389.03

CROSS INDEX DIAGRAM



Firm/Agency, Address

Cotton D. Jones, P.L.S.
A.V.I., p.c.
2035 Westland Road
Cheyenne, WY 82001
Telephone Number: (307) 637-6017

This corner record was prepared by me or under my direction and supervision.
SEAL & SIGNATURE

